

1. Introduction

This guideline details patient management pathways from receipt of referral into the Electrodiagnostics Service (EDS) through to onward referral (where appropriate) and discharge from EDS. Note that this excludes patients covered under the Newborn Hearing Screening Programme (NHSP); these patients are covered in a separate guideline.

2. Scope

This document applies to all patients (with exception of those referred from the NHSP pathway) tested in EDS audiology. This guideline is for Clinicians and Health Professionals within UHL who are considering a referral to the Audiology section of the Electrodiagnostics Service (EDS).

3. Recommendations, Standards and Procedural Statements

Paediatric (non NHSP) patients shall follow the pathway shown in Figure 1.

Adult patients shall follow the pathway shown in Figure 2.

Decisions such as rejection of a referral, to discharge following a Did Not Attend (DNA)/Were Not Brought (WNB) appointment, and reason for discharge from EDS should be clearly documented on the patient management system (Tiara).

Figure 1 Paediatric (non-NHSP) Patient Pathway

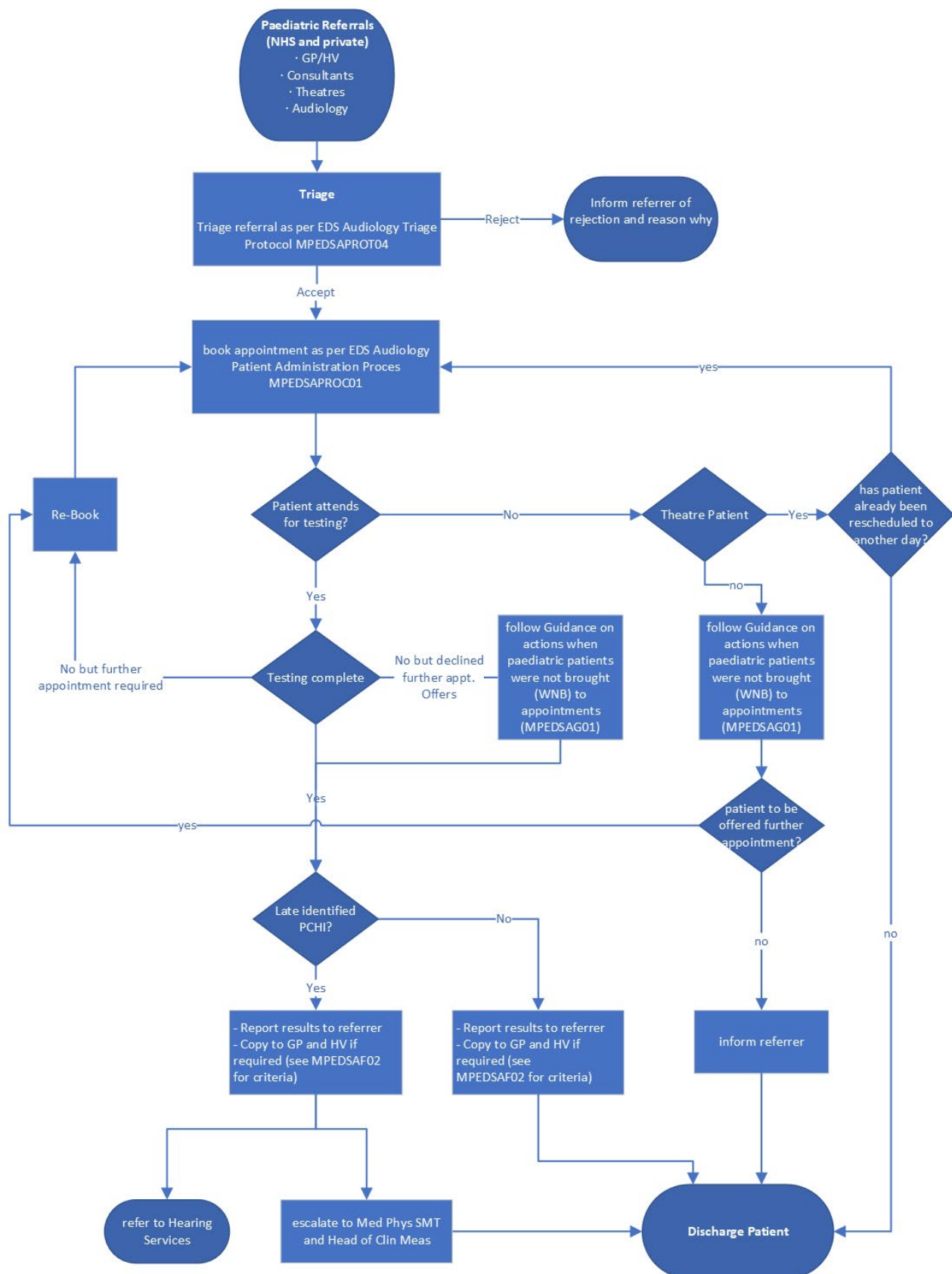
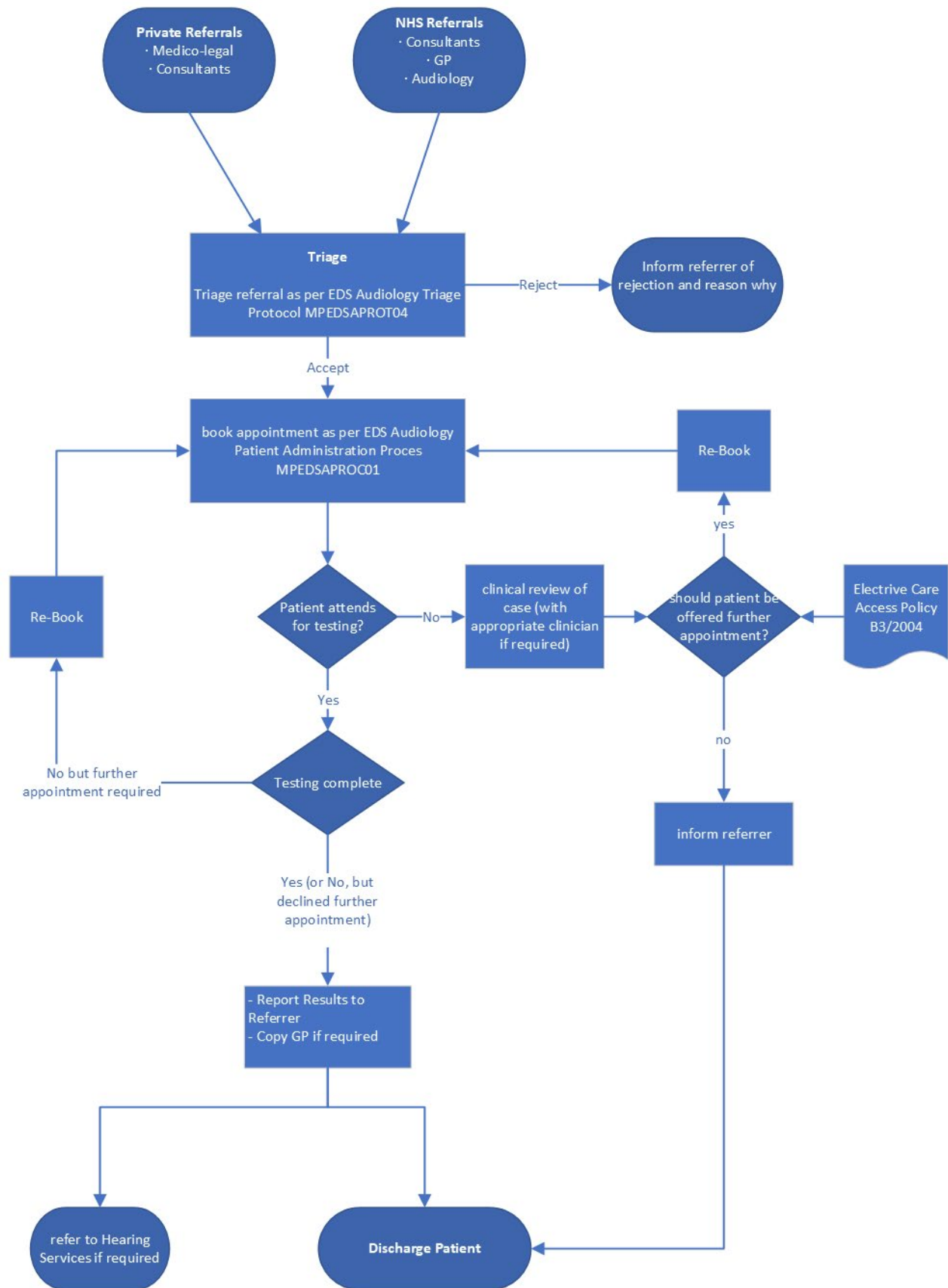


Figure 2 Adult Patient Pathway



4. Education and Training

No further training is required to implement this guideline

5. Monitoring and Audit Criteria

Key Performance Indicator	Method of Assessment	Frequency	Lead
Compliance with each pathway defined in this guideline	Clinical audit of at least one patient per pathway	annual	EDS Lead Audiologist

6. Legal Liability Guideline Statement

See section 6.4 of the UHL Policy for Policies for details of the Trust Legal Liability statement for Guidance documents

7. Supporting Documents and Key References

1. EDS Guidance on actions when paediatric patients were not brought (WNB) to appointments,
2. EDS Audiology Triage Protocol (local document)
3. EDS Referral Checklist (local document)
4. UHL Elective Care Access Policy, B3/2004
5. BRITISH SOCIETY OF AUDIOLOGY (2021), Guidelines for the Early Audiological Assessment and Management of Babies Referred from the Newborn Hearing Screening Programme [Online]. Available at: [web link](#) [Accessed 26/01/24]
6. Public Health England Guidance: Guidelines for surveillance and audiological referral for infants and children following newborn hearing screen. Updated 19 July 2019.

8. Key Words

Electrodiagnostics, Medical Physics, EDS, ABR, OAE, PTA, ASSR, CERA, hearing test, paediatric, audiology, PCHI, theatres, sedation, GA, medico-legal

9. Glossary

- ABR Auditory Brainstem Response
- ASSR Auditory Steady State Response
- CERA Cortical Evoked Response Audiometry
- Clin Meas Clinical Measurement
- DNA Did Not Attend
- EDS Electrodiagnostics Service
- GA General Anaesthetic
- GP General Practitioner
- HV Health Visitor

- Med Phys SMT Medical Physics Senior Management Team)
- NHSP Newborn Hearing Screening Programme
- OAE Otoacoustic Emissions
- PCHI Permanent Childhood Hearing Impairment
- PTA Pure tone audiometry
- WNB Were Not Brought

This line signifies the end of the document

This table is used to track the development and approval and dissemination of the document and any changes made on revised / reviewed versions

DEVELOPMENT AND APPROVAL RECORD FOR THIS DOCUMENT			
Author / Lead Officer:	Joanne Cowe		Job Title: Head of Clinical Measurement
Reviewed by:	PGC		
Approved by:	PGC		Date Approved: 19 April 2024
REVIEW RECORD			
Date	Issue Number	Reviewed By	Description Of Changes (If Any)
DISTRIBUTION RECORD:			
Date	Name	Dept	Received